

## The Talux System

This is how patios  
and balconies are built today!

## Table of contents

---

We are TALUX	3
System description	4
Your advantages at a glance	5
Innovations at a glance	6-7
Projects and social media	8-9
One system – infinite possibilities	10-11
Data sheet – slim system	12-13
Data sheet – raised system	14-15
Data sheet – timber and WPC system	16-17
Data sheets – LED profiles	18-21
Data sheets – profiles for Pool Copings	22-23
LED strips and controls	24
FAQ – Frequently Asked Questions	25
Installation guide	26-27
Further assembly instructions	28-29
Application guidelines & notes	30-31

## We are TALUX

One idea is driving us since the foundation of our company: Developing high-quality installation systems for tiles and boards that set new standards, achieve perfect results for our customers and become the role model and technical standard in the industry.

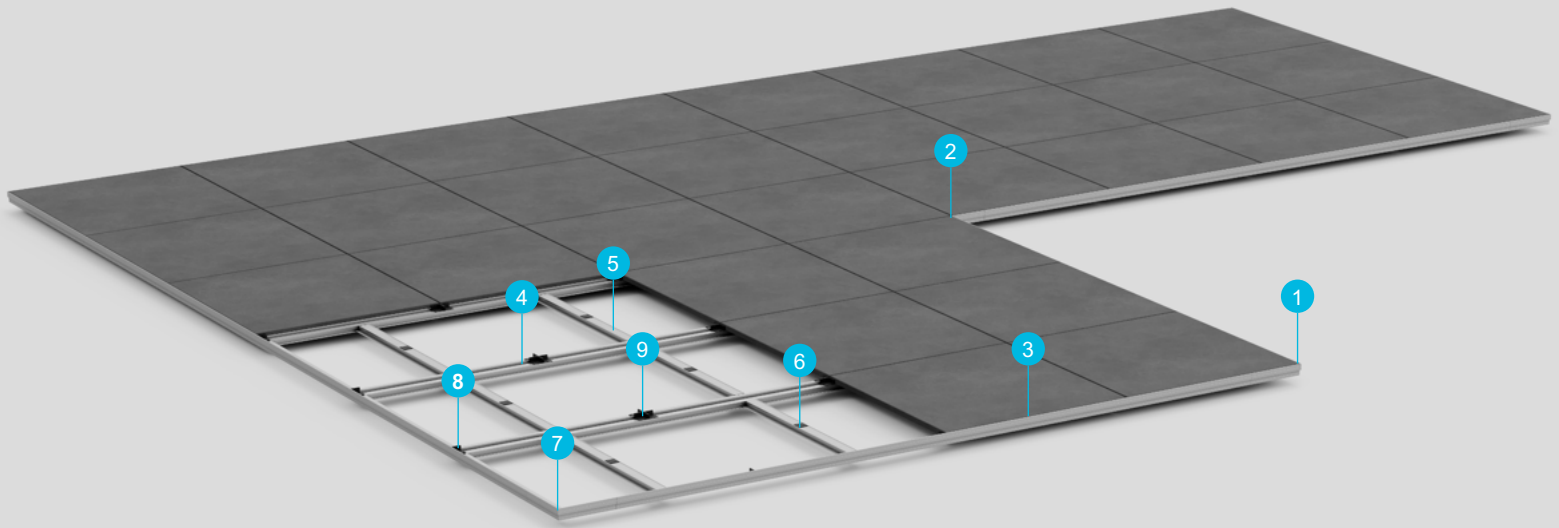
With now more than 10 years of experience, we are one of the first companies to develop and produce innovative laying systems for balconies, patios, flat roofs and individual constructions. Our practical experience has always served us well, and this shows in countless places in our well-designed systems.

A lot has happened since: Thousands of successfully completed small and large projects in both the private and public sectors, over one hundred thousand square metres of installed space and a large number of patents, utility models and design applications underline TALUX's expertise and innovative strength.

TALUX provides economical system solutions that are both innovative and unique in technology and construction, design and quality. We strive to meet these high standards time and time again.

Tiles and boards  
one lays them with and on Talux.

# An overview of the TALUX system



- |                   |                      |                             |
|-------------------|----------------------|-----------------------------|
| 1 Exterior corner | 4 Secondary profile  | 7 Joint element corner      |
| 2 Interior corner | 5 Supporting profile | 8 Joint element T-shape     |
| 3 Edge profile    | 6 Support pad        | 9 Joint element cross-shape |

## System description

- The TALUX system is an aluminium profile system for easy, quick and economical laying of stone, ceramic and calibrated natural stone tiles as well as wood and WPC boards. There are many applications, including balconies, patios, flat roofs, swimming pool copings, roof terraces and walkways. The TALUX system can even be used for customised constructions such as stair treads or landings.
- The system is available in two profile thicknesses. The minimum assembly height (excluding covering) is 22 mm for the slim system and 64 mm for the raised system.
- Basically, the system consists of the edge profiles, corner modules (exterior corners, interior corners), secondary profiles, support profiles as well as the joint elements.
- The exterior and interior corners form a frame with the edge profiles that corresponds to the floor plan of the installation surface. The edge profiles are fastened to the corner modules and to each other with linear connectors.
- The secondary profiles rest on the horizontal face of the edge profiles. At the joints, the profiles are spaced approx. 3-5 mm apart. For laying WPC or timber boards, the secondary profiles with screw channel allow installation with visible or invisible fastening.
- Support profiles are used for tile widths of 600 mm and more. They are inserted together with the support pads underneath the centre of the tile to protect the large-format tiles under greater loads.
- The tile material is installed on the profile system using plastic joint elements. The dimples on the contact surface adapt to the underside of the tile, compensate for tolerances of up to approx. 1 mm and ensure that the tiles are insulated against impact sound.
- Flush panels can be fitted to the side upstand of the edge profiles, which close the system flush and imperceptible at the bottom. As an option, the panels and edge profiles are also available powder-coated in a RAL colour of your choice.

## Your advantages at a glance

### Sustainable and sturdy design

- ✓ No shifting or rocking tiles\*
- ✓ No frost damage due to the non-bonded laying technique
- ✓ Weather-resistant
- ✓ Uniform and consistent joint pattern\*
- ✓ Tile support for impact sound insulation
- ✓ High quality attractive edge finish

### High system flexibility and endless application possibilities

- ✓ Applicable on all load-bearing substrates
- ✓ Suitable for all construction types and floor plans (also for special purpose solutions)
- ✓ Can be used for tiles and boards in all common thicknesses
- ✓ Variable joint width of 4 mm or 2 mm or jointless
- ✓ Flexible system height of 22 mm or 64 mm
- ✓ Suitable for renovations due to low build-up height

### Easy and cost-effective assembly

- ✓ Quick and easy installation of the system components  
(time savings of up to 30 % compared to conventional laying methods)
- ✓ Mortar/adhesive-free installation and no waiting times
- ✓ Lightweight aluminium profiles

\*when properly installed

## Talux installation video

Just scan the QR code and you will be taken directly to our Talux installation video.



## Request a quotation

We will provide an obligation-free quotation for your building project!

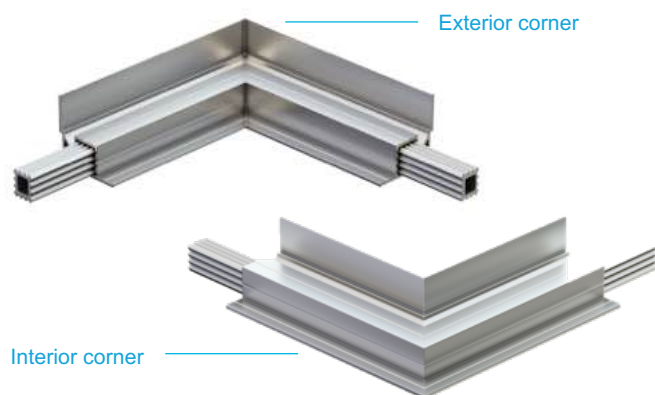
Please send us a dimensioned floor plan and the planned tile dimensions:

**[info@talux-system.de](mailto:info@talux-system.de)**

or use our enquiry form at:

**[www.talux-system.de/angebotsanfrage](http://www.talux-system.de/angebotsanfrage)**

The TALUX system combines a multitude of sophisticated features and intelligent concepts in one innovative and high-quality product.



## Prefabricated corner module

The prefabricated inner and outer corners at 90 degrees facilitate a fast frame assembly, as there is no need to cut mitres on the construction site.

The corner modules have a leg length of 100 mm and are designed to allow dismantling and shortening of the legs. So you retain full flexibility for the individual construction requirements.

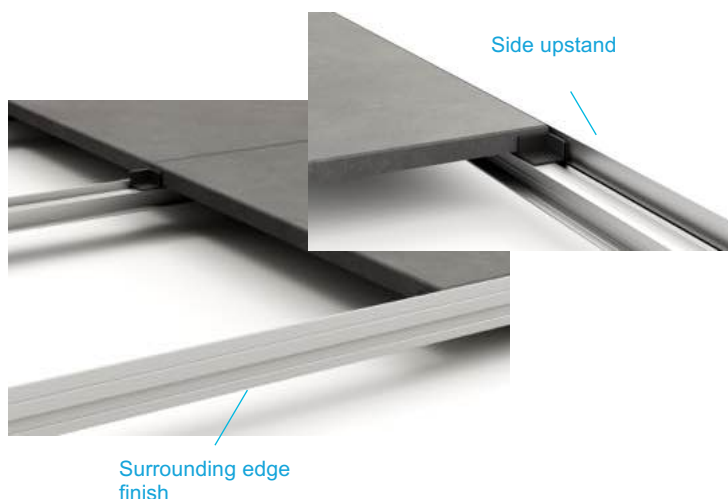
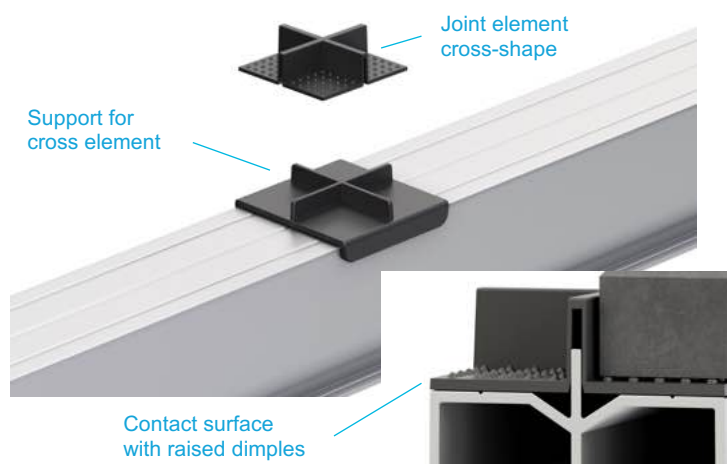
As an alternative to the prefabricated corner modules, you can also mitre-cut the edge profiles individually and then fasten them with external connectors. As a result, you can also effortlessly produce corners which are not 90 degrees.

## Joint elements and supports

The soft plastic joint elements provide a flawless, impact sound-insulated support for the tiles.

The raised dimples on the support surface adapt optimally to the underside of the tile and compensate for minor material variations in the tile.

The joint elements and corresponding supports allow variable joint widths of 2 mm or 4 mm and come as corner, T-shape and cross-shape to match your desired installation pattern.



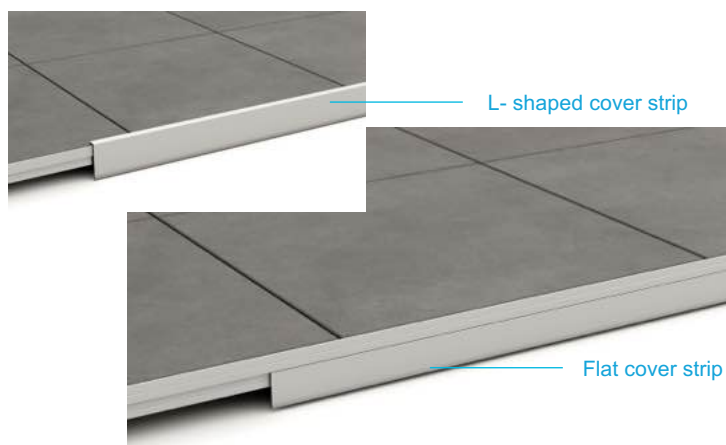
## Surrounding edge finish

The edge profiles with lateral upstand create an all-round, attractive edge finish.

The upstand also guarantees stability and keeps the tiles from shifting. The tiles remain in their position permanently and the joint pattern is maintained in the long term.

The edge profiles are supplied with side upstands of 22 and 38 mm height to match the standard tile thicknesses.

Although being a system solution, TALUX offers numerous individual adaptation options and therefore maximum flexibility for your wishes and building conditions.



## Side cover strip

Side cover strips can be fitted to the outer recesses of the edge profiles to provide a flush, impervious finish to the system.

The cover strips are produced in individual widths to suit the respective building situation and are available in flat or L-shaped versions.

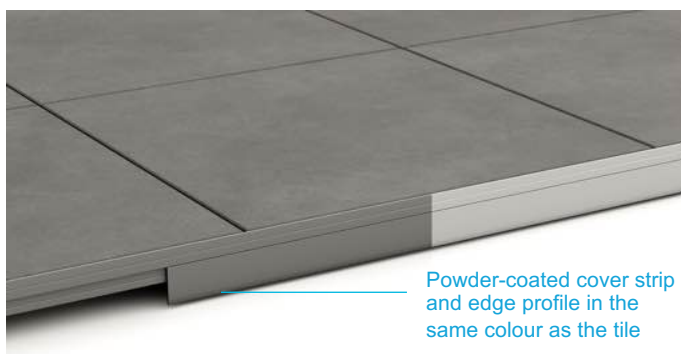
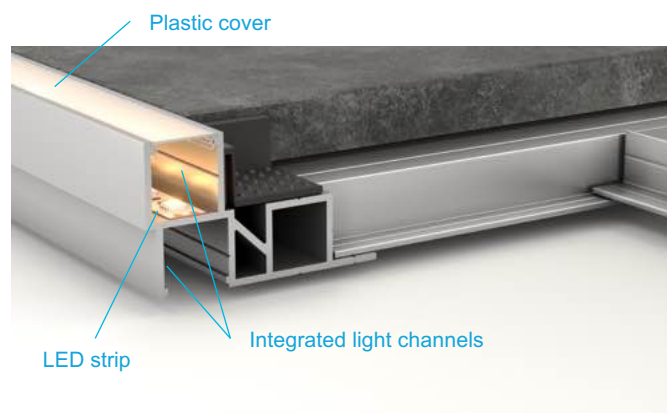
For installation, the panels are screwed to the recess of the edge profile using self-drilling pan head screws.

## Illumination solutions

Using TALUX LED strip profiles you can create impressive indirect lighting on your patio simply and quickly.

The profile's embedded light channels allow for the installation of self-adhesive LED strips in various shades of white or colour. Clip-on plastic covers protect the LED strip and ensure a perfect diffuse light distribution. You can control the LED strips either by switch, wireless remote control or via WiFi/App.

And the best part: Get profiles and the right LED technology from a single source at TALUX!



## Powder coating

All TALUX profiles, corner modules and cover strips are also available powder-coated in a RAL colour of your choice.

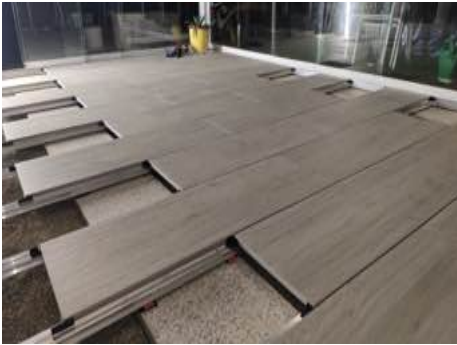
Particularly at the visible borders of the installation surface, you can achieve visually high-quality surfaces in this way.

Whether in the matching hue of the tiles, the house wall or as a colour contrast, you can create individual colour highlights with powder-coated profiles and cover strips.

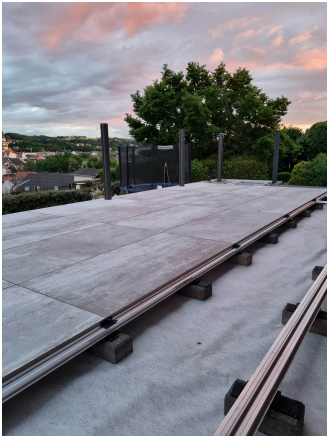


# Projects and social media

Enough said for now...  
....so we gladly let images from our many projects speak for us:



TALUX®

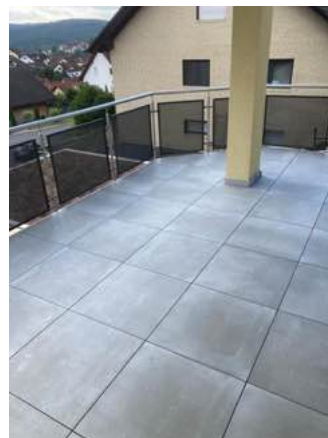
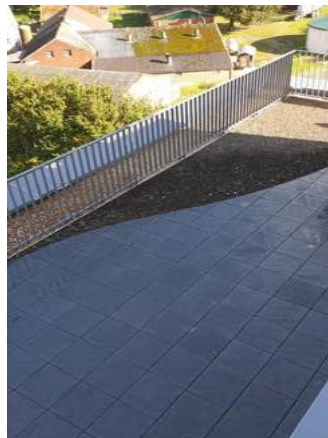




More than 1000 completed projects and >100,000 m² of installed surface  
**The TALUX system: Tried and tested on the job!**



[www.talux-system.de](http://www.talux-system.de)



You can also find the latest project images on our social media channels.  
 Follow us on Facebook and Instagram for product news, hints, trade show dates and more



[www.facebook.com/taluxsystem](https://www.facebook.com/taluxsystem)



[www.instagram.com/talux\\_gmbh](https://www.instagram.com/talux_gmbh)



SCAN ME



SCAN ME

## One system – infinite possibilities

The sophisticated system design provides for easy installation with maximum flexibility regarding the individual installation conditions on the construction site.

### Height compensation

The TALUX support foot in combination with TALUX wedges can compensate for height differences of up to 215 mm. You can also use commercially available pedestals, strip or pile foundations or rectangular paving stones.



Height compensation with strip foundations, rubber pads and wedges



Height compensation with TALUX support foot and wedges



Height compensation with paving stones, rubber pads and wedges

### Door niches and jambs

Door niches and jambs can easily be fitted with TALUX corner modules if they are deep enough. With smaller niche depths of less than 200 mm, the mitres can also be fitted directly to the edge profiles and then screwed on from the outside with a corner connector.



Bordering of a door niche with the TALUX edge profile combined with external and interior corners



Bordering of a door niche in combination with external corner connectors and mitres cut to the edge profile



Circumferential bordering of an L-wall with the TALUX edge profile combined with external and interior corners

### Columns and downpipes

You can also easily configure downpipes and columns with the TALUX external and interior corners.



Recess for a downpipe with trimmed mitres and corner connectors



Cut-out for a downpipe with recessed TALUX edge profile



Circumferential bordering of a column with the TALUX edge profile and interior corners



Whether rounded corners, door niches, jambs or cantilevers  
no problem with TALUX!

## Curves

Due to the TALUX slot profile, you can use the system even on floor plans with curvatures.



The TALUX slot profile to fit along a circular wall



The TALUX slotted profile on a round surface with incised tile flooring



The TALUX slotted profile fitted along a circular wall with incised tile flooring

## Drainage gutter

Drainage covers or entire gutter elements can be inserted into the TALUX system or connected to the side of the edge profile.



Drainage grating, resting on a TALUX system channel body



Drainage gutter, flush fitted into the TALUX system



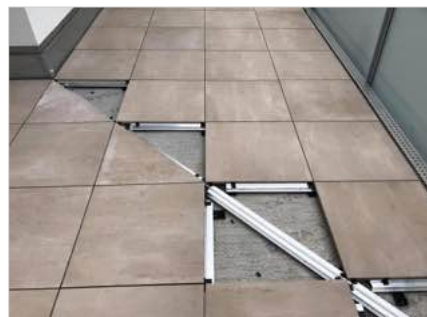
Drainage gutter, fitted to the side of the TALUX edge profile

## Other solutions

Nothing is impossible. The sophisticated and flexible system allows you to implement virtually all structural and design requirements simply, quickly and to a high standard during on-site installation.



With TALUX, you can also handle even the most complicated floor plan shapes



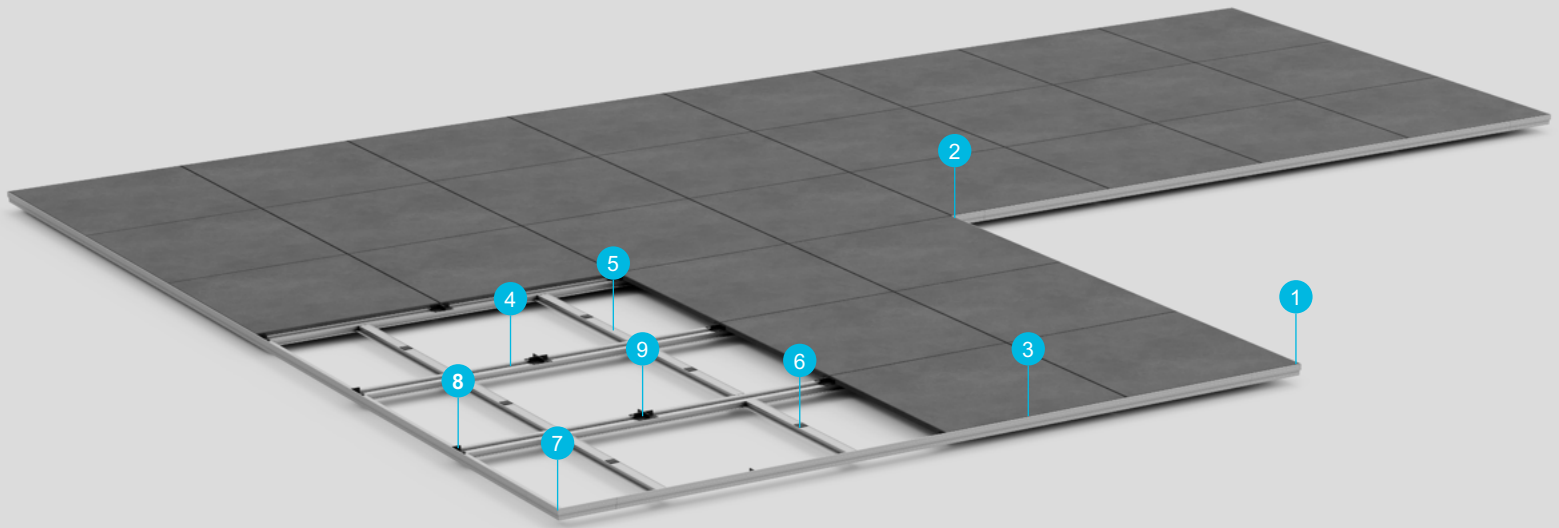
Two diagonally converging sloping surfaces: no problem with TALUX!



Even minor protrusions are easy to implement with the TALUX system

# Data sheet – slim system

Slim system with a substructure height of 22 mm –  
Suitable for stone, ceramic and calibrated natural stone tiles, as well as for timber & WPC boards

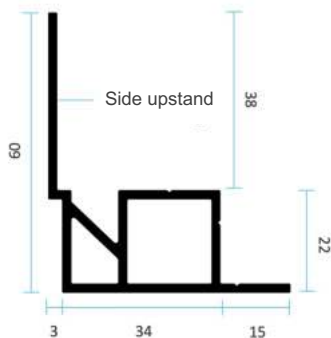


## Technical data

- |                   |                      |                             |
|-------------------|----------------------|-----------------------------|
| 1 Exterior corner | 4 Secondary profile  | 7 Joint element corner      |
| 2 Interior corner | 5 Supporting profile | 8 Joint element T-shape     |
| 3 Edge profile    | 6 Support pad        | 9 Joint element cross-shape |

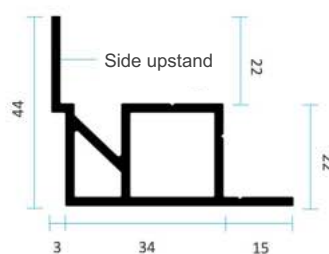
### Edge profile Slim System

- side upstand: 38 mm
- for tiles thicker than 36 mm



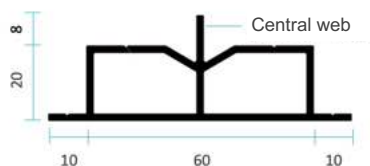
### Edge profile Slim System

- side upstand: 22 mm
- for tiles thicker than 20 mm



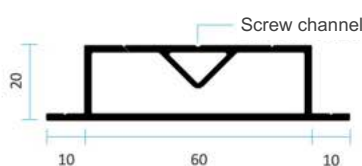
### Secondary profile Slim system

- with central web
- for stone and ceramic tiles



### Secondary profile Slim system

- with screw channel
- for timber & WPC boards, stone and ceramic tiles



## The advantages at a glance

- ✓ Low profile height of 22 mm for low build-up heights
- ✓ Suitable for all tile formats
- ✓ Quick and easy assembly: time savings of up to 30 % compared to conventional laying methods
- ✓ Customised, flexible system solution
- ✓ Impact sound insulated tile support
- ✓ Consistent joint pattern
- ✓ Variable joint width: 2 mm / 4 mm

## Technical data for profiles

Material: Aluminium EN AW 6060 T 66  
Surface: mill-finished / powder-coated  
Lengths: 3 m / 4 m / 6 m

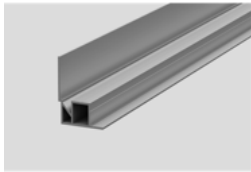
## System accessories

- Exterior and interior corners
- Supporting profile
- Joint elements
- Supports for joint elements
- Connectors
- Connection profiles
- Finishing covers
- Drainage gutter

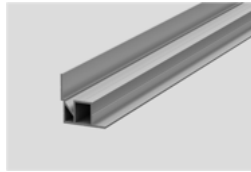
## Height compensation

- TALUX support foot
- Rubber pads
- Wedges

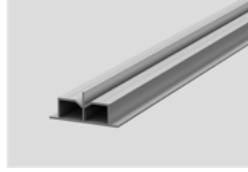
## Profiles



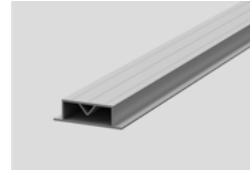
**Edge profile**  
Upstand 38 mm



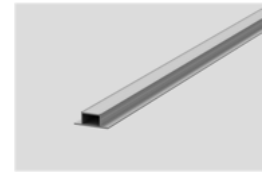
**Edge profile**  
Upstand 22 mm



**Secondary profile**  
With central web

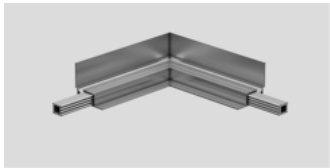


**Secondary profile**  
With screw channel

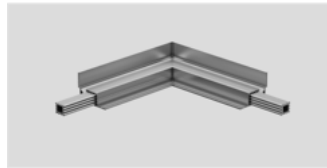


**Supporting profile**  
Slim system

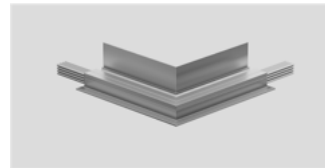
## Accessories and height compensation



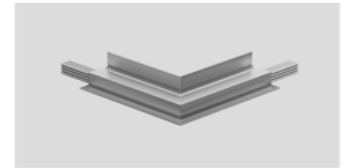
**Exterior corner, 90 degrees**  
Upstand 38 mm



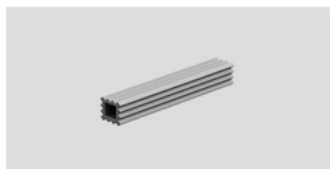
**Exterior corner, 90 degrees**  
Upstand 22 mm



**Interior corner, 90 degrees**  
Upstand 38 mm



**Interior corner, 90 degrees**  
Upstand 22 mm



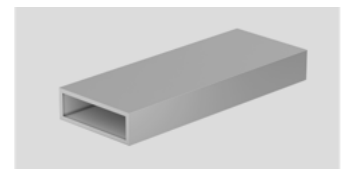
**Longitudinal connector**  
Inner | length: 100 mm



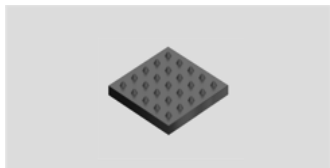
**Longitudinal connector**  
Outer | length: 100 mm



**Corner connector**  
90 degrees | length: 60/60 mm



**Connection profile**  
Dimensions: 30/15/2 mm



**Support pad**  
Board support on profile



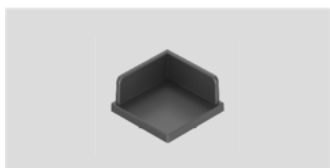
**Joint element corner**  
For exterior corner, 90 degrees



**Joint element T-shape**  
For edges and joints



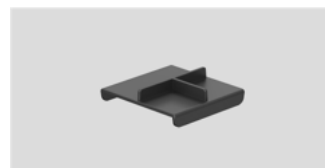
**Joint element cross-shape**  
For cross joints



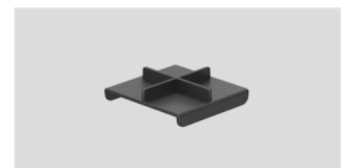
**Corner support**  
For interior corner, 90 degrees



**T-shaped support**  
For edges and joints



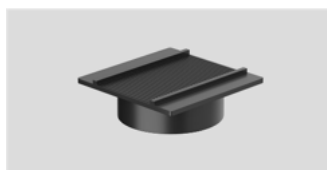
**T-shaped support**  
For joints



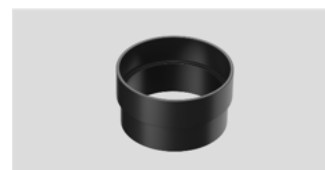
**Cross shaped support**  
For cross joints



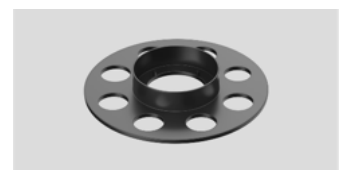
**Rubber pads**  
Dimensions: 90/60/4 or 6 mm



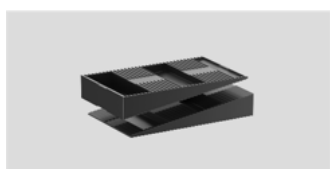
**Support foot support plate**  
Dimensions: 80/80/5 mm



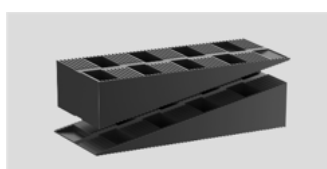
**Support foot spacer**  
Dimensions: 70/70/25 mm



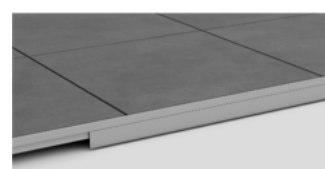
**Support foot base plate**  
Dimensions: 150/150/25 mm



**Wedges, small**  
Levelling zone: 15-25 mm



**Wedges, big**  
Levelling zone: 25-35 mm



**Side cover strip**  
Dimensions: 2000/2/25-175 mm

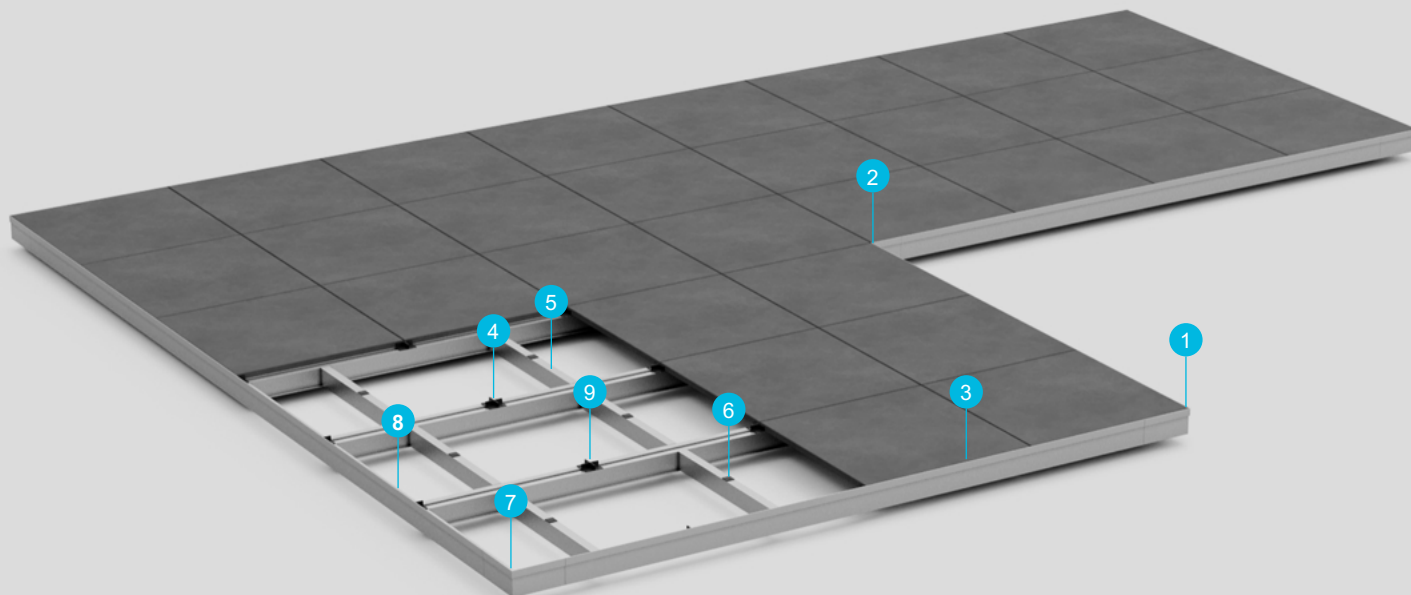
[www.talux-system.de](http://www.talux-system.de)



# Data sheet – raised system

Raised system with a substructure height of 64 mm-

Suitable for stone, ceramic and calibrated natural stone tiles, as well as for timber and WPC boards

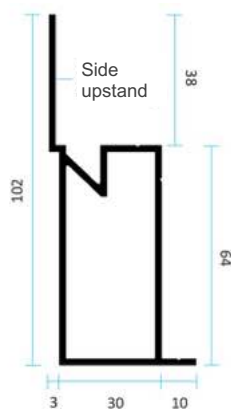


## Technical data

- |                   |                      |                             |
|-------------------|----------------------|-----------------------------|
| 1 Exterior corner | 4 Secondary profile  | 7 Joint element corner      |
| 2 Interior corner | 5 Supporting profile | 8 Joint element T-shape     |
| 3 Edge profile    | 6 Support pad        | 9 Joint element cross-shape |

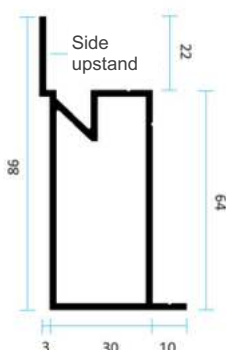
### Edge profile Raised System

- side upstand: 38 mm
- for tiles thicker than 36 mm



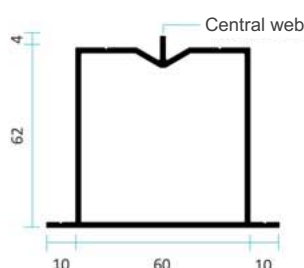
### Edge profile Raised System

- side upstand: 22 mm
- for tiles thicker than 20 mm



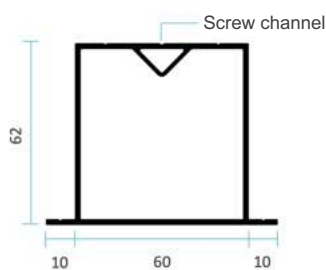
### Secondary profile Raised system

- with central web
- for stone and ceramic tiles



### Secondary profile Raised system

- with screw channel
- for timber & WPC boards, stone and ceramic tiles



## The advantages at a glance

- ✓ 64 mm profile height for applications with increased build-up height
- ✓ Fewer support points due to larger span (up to 1,20 m)
- ✓ Suitable for all tile formats
- ✓ Quick and easy assembly: time savings of up to 30 % compared to conventional laying methods
- ✓ Customised, flexible system solution
- ✓ Impact sound insulated tile support
- ✓ Consistent joint pattern
- ✓ Variable joint width: 2 mm / 4 mm

## Technical data for profiles

Material: Aluminium EN AW 6060 T 66  
Surface: mill-finished / powder-coated  
Lengths: 3 m / 4 m / 6 m

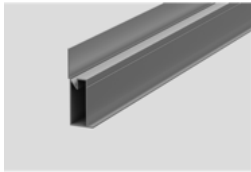
## System accessories

- Exterior and interior corners
- Supporting profile
- Joint elements
- Supports for joint elements
- Connectors
- Connection profiles
- Finishing covers
- Drainage gutter

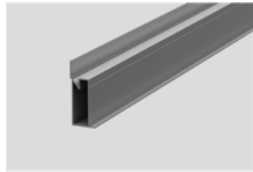
## Height compensation

- TALUX support foot
- Rubber pads
- Wedges

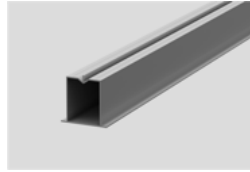
## Profiles



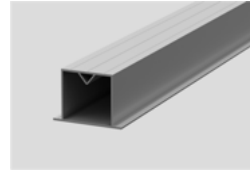
**Edge profile**  
Upstand 38 mm



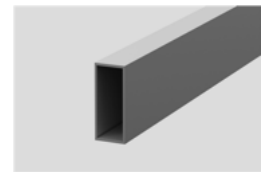
**Edge profile**  
Upstand 22 mm



**Secondary profile**  
With central web

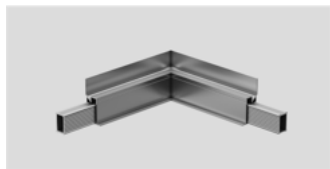


**Secondary profile**  
With screw channel

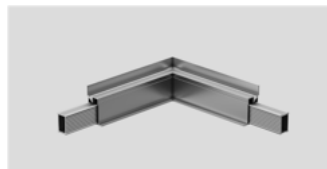


**Supporting profile**  
Raised system

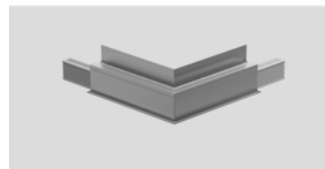
## Accessories and height compensation



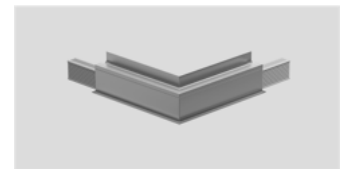
**Exterior corner, 90 degrees**  
Upstand 38 mm



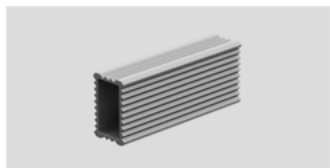
**Exterior corner, 90 degrees**  
Upstand 22 mm



**Interior corner, 90 degrees**  
Upstand 38 mm



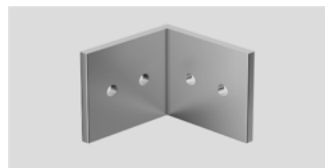
**Interior corner, 90 degrees**  
Upstand 22 mm



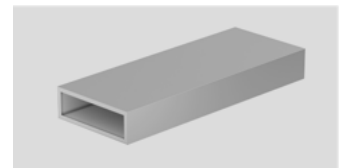
**Longitudinal connector**  
Inner | length: 100 mm



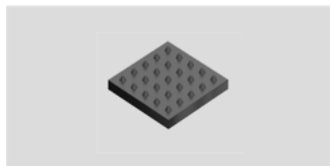
**Longitudinal connector**  
Outer | length: 100 mm



**Corner connector**  
90 degrees | length: 60/60 mm



**Connection profile**  
Dimensions: 30/15/2 mm



**Support pad**  
Board support on profile



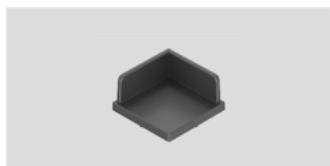
**Joint element corner**  
For exterior corner, 90 degrees



**Joint element T-shape**  
For edges and joints



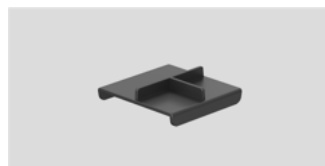
**Joint element cross-shape**  
For cross joints



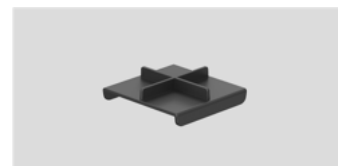
**Corner support**  
For interior corner, 90 degrees



**T-shaped support**  
For edges and joints



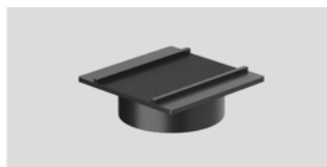
**T-shaped support**  
For joints



**Cross shaped support**  
For cross joints



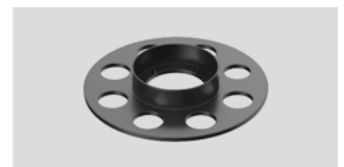
**Rubber pads**  
Dimensions: 90/60/4 or 6 mm



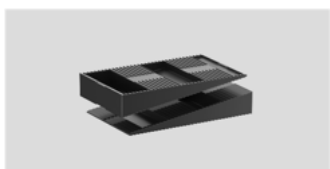
**Support foot support plate**  
Dimensions: 80/80/5 mm



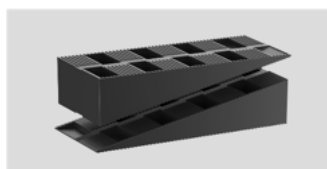
**Support foot spacer**  
Dimensions: 70/70/25 mm



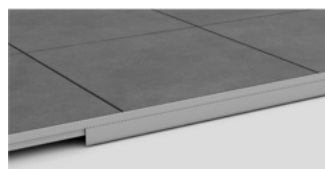
**Support foot base plate**  
Dimensions: 150/150/25 mm



**Wedges, small**  
Levelling zone: 15-25 mm



**Wedges, big**  
Levelling zone: 25-35 mm

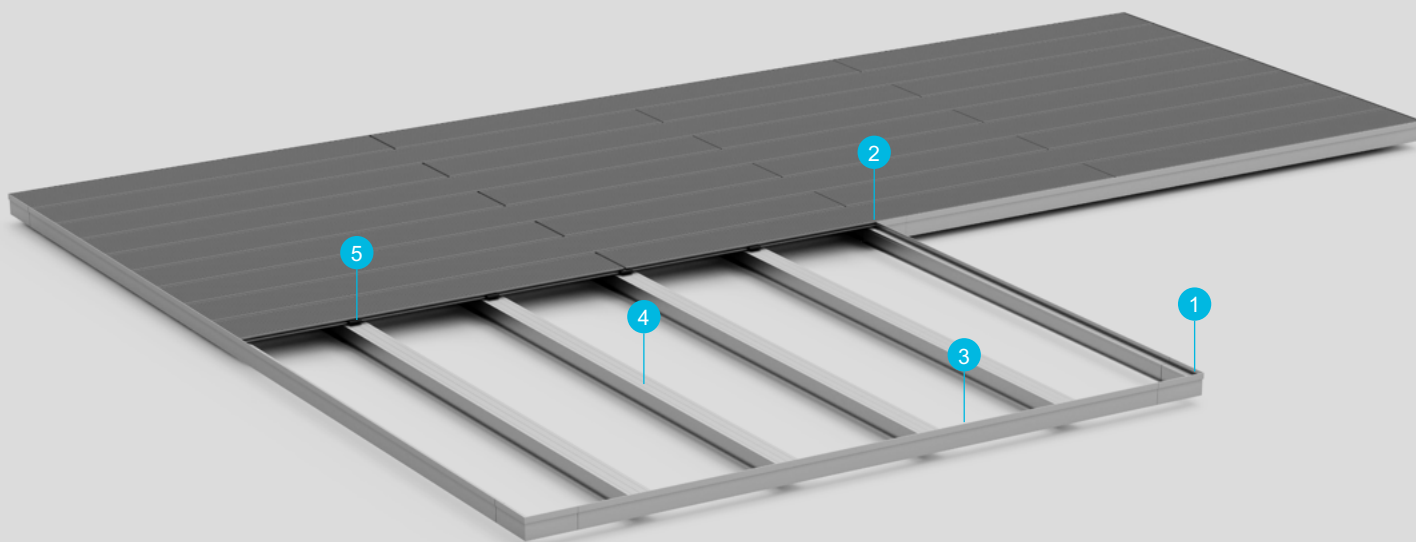


**Side cover strip**  
Dimensions: 2000/2/25-175 mm

[www.talux-system.de](http://www.talux-system.de)

# Data sheet – Slim and Raised System for timber and WPC boards

Slim and Raised system with a substructure height of 22 mm or 64 mm – suitable for timber and WPC boards

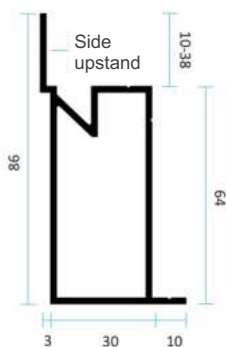


## Technical data

- 1 Exterior corner
- 2 Interior corner
- 3 Edge profile
- 4 Secondary profile
- 5 Floorboard fastening

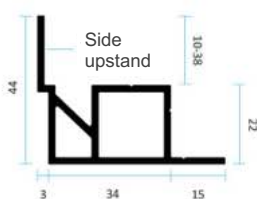
### Edge profile Raised System

- side upstand: 22/38 mm



### Edge profile Slim System

- side upstand: 22/38 mm

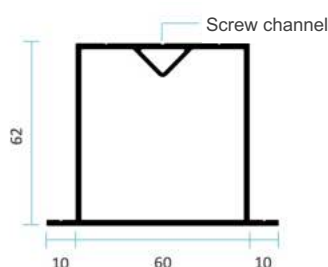


### The advantages at a glance

- ✓ Suitable for timber & WPC boards, visible and invisible fastening
- ✓ Variable height of the substructure: 22 mm or 64 mm
- ✓ Quick and easy assembly
- ✓ Customised, flexible system solution

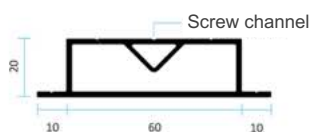
### Secondary profile Raised system

- with screw channel



### Secondary profile Slim system

- with screw channel



### Technical data for profiles

Material: Aluminium EN AW 6060 T 66  
Surface: mill-finished / powder-coated  
Lengths: 3 m / 4 m / 6 m

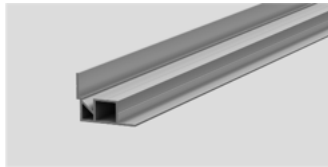
### System accessories

- Exterior and interior corners
- Connector
- Connection profiles
- Finishing covers
- Drainage gutter

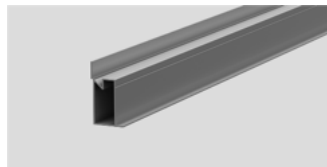
### Height compensation

- TALUX support foot
- Rubber pads
- Wedges

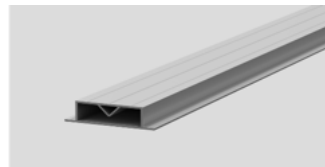
## Profiles



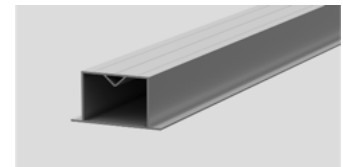
**Edge profile Slim**  
Upstand 10-38 mm



**Edge profile Raised**  
Upstand 10-38 mm

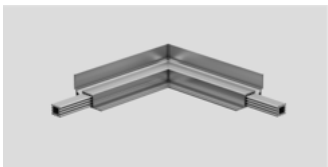


**Secondary profile Slim**  
With screw channel

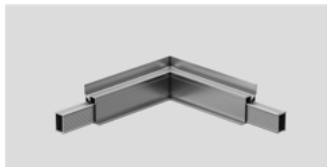


**Secondary profile Raised**  
With screw channel

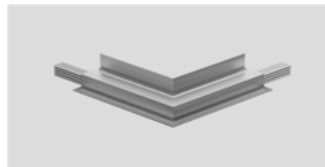
## Accessories and height compensation



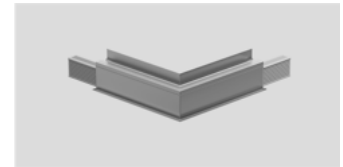
**Exterior corner Slim, 90 degrees**  
Upstand 10-38 mm



**Exterior corner Raised, 90 degrees**  
Upstand 10-38 mm



**Interior corner Slim, 90 degrees**  
Upstand 10-38 mm



**Interior corner Raised, 90 degrees**  
Upstand 10-38 mm



**Longitudinal connector Slim**  
Inner | length: 100 mm



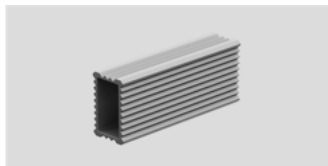
**Longitudinal connector Slim**  
Outer | length: 100 mm



**Corner connector Slim**  
90 degrees | length: 60/60 mm



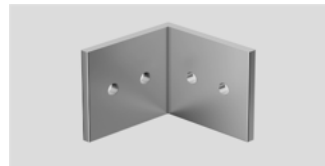
**Connection profile**  
Dimensions: 30/15/2 mm



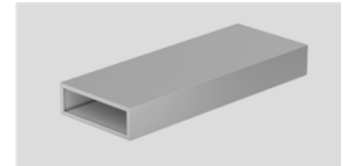
**Longitudinal connector Raised**  
Inner | length: 100 mm



**Longitudinal connector Raised**  
Outer | length: 100 mm



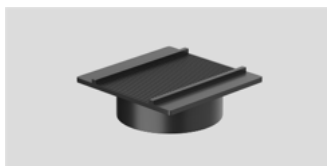
**Corner connectors Raised**  
90 degrees | length: 60/60 mm



**Profile for cantilevers**  
Dimensions: 60/15/2 mm



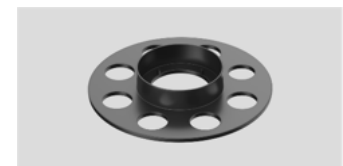
**Rubber pads**  
Dimensions: 90/60/4 or 6 mm



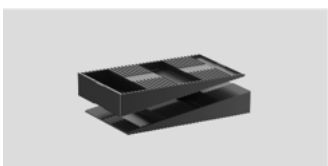
**Support foot support plate**  
Dimensions: 80/80/5 mm



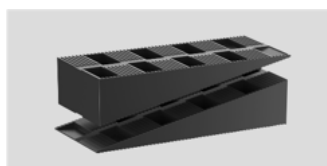
**Support foot spacer**  
Dimensions: 70/70/25 mm



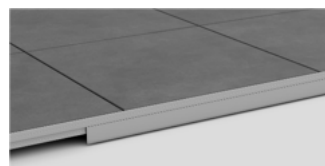
**Support foot base plate**  
Dimensions: 150/150/25 mm



**Wedges, small**  
Levelling zone: 15-25 mm



**Wedges, big**  
Levelling zone: 25-35 mm



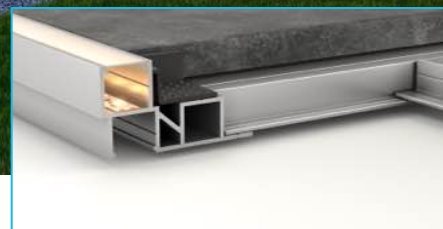
**Side cover strip**  
Dimensions: 2000/2/25-175 mm

[www.talux-system.de](http://www.talux-system.de)

# Data sheet – LED edge profile “Uplight”



**Profiles & LED technology**  
Everything from a single source!



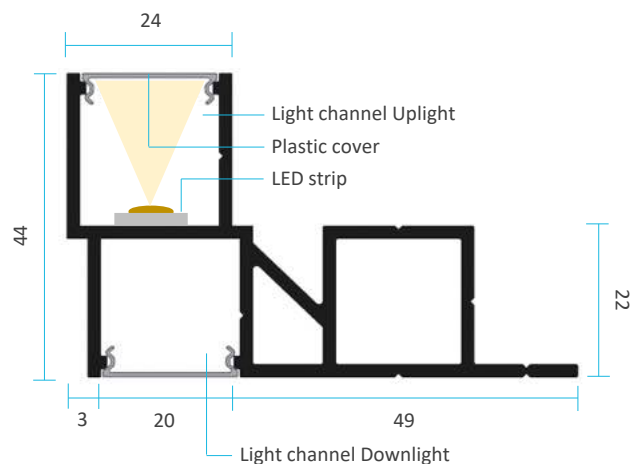
## Product description

The TALUX edge profile Uplight makes it quick and easy to build high-quality indirect lighting in patio and balcony spaces. The two integrated light channels open up a wide range of design options. Whether as a circumferential illumination line running along the laid surface, as a focused accentuation of facades and lawn edges, or as downward lighting, as a floating surface: there are no limits to the creative potential with TALUX LED profiles.

The edge profile Uplight is compatible with the TALUX Slim System (22 mm) and complements the functional advantages of the TALUX System with innovative and creative options for indirect lighting.

To match the profile, we offer ready-made corner modules, water-protected (IP67) LED strips in various colours and white hues, control sets, and clip-on plastic covers for light diffusion.

## Technical data



## The advantages at a glance

- ✓ 2 integrated light channels for straightforward installation of indirect lighting
- ✓ Innovative system solution
- ✓ Low profile height of 22 mm for low build-up heights
- ✓ Suitable for tiles with 20 mm thickness
- ✓ Profiles & LED technology from a single source

## Technical data for profiles

Material: Aluminium EN AW 6060 T 66  
Surface: mill-finished / powder-coated  
Lengths: 3 m / 6 m

## System accessories

- Exterior and interior corners
- Plastic covers
- LED lighting and controls

## LED lighting (IP67)

- Warm white / neutral white / cool white
- CCT (all shades of white)
- RGBWW (all colours + warm white)
- RGB-CCT (all colours + all shades of white)

## LED control

- Switch
- Remote control
- App control (WiFi)
- DALI





**Profiles & LED technology**  
Everything from a single source!

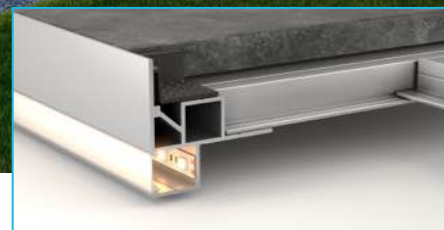
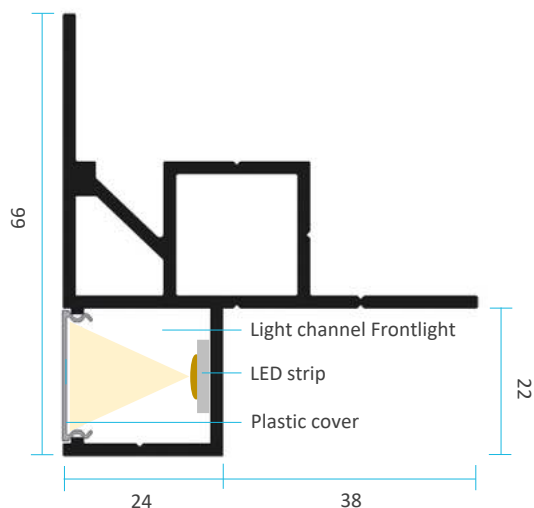
## Product description

The TALUX edge profile Frontlight makes it quick and easy to build high-quality indirect lighting for patio and balcony spaces. The integrated light channel along the front of the profile provides the option for an impressive illuminated edge finish on free-standing sides of the patio area. This makes the profile the perfect choice for flat roofs and pool copings, where the indirect lighting sets the scene beautifully.

The edge profile Frontlight is compatible with the TALUX Slim System (22 mm) and complements the functional advantages of the TALUX System with innovative and creative options for indirect lighting.

To match the profile, we offer ready-made corner modules, water-protected (IP67) LED strips in various colours and white hues, control sets, and clip-on plastic covers for light diffusion. To achieve a premium quality surface, the profiles are also available powder-coated in a RAL colour of your choice.

## Technical data



## The advantages at a glance

- ✓ Integrated light channel for straightforward installation of indirect lighting
- ✓ Innovative system solution
- ✓ Low profile height of 44 mm for low build-up heights
- ✓ Suitable for tiles with 20 mm thickness
- ✓ Profiles & LED technology from a single source

## Technical data for profiles

Material: Aluminium EN AW 6060 T 66  
Surface: mill-finished / powder-coated  
Lengths: 3 m / 6 m

## System accessories

- Exterior and interior corners
- Plastic covers
- LED lighting and controls

## LED lighting (IP67)

- W arm white / neutral white / cool white
- CCT (all shades of white)
- RGBWW (all colours + warm white)
- RGB-CCT (all colours + all shades of white)

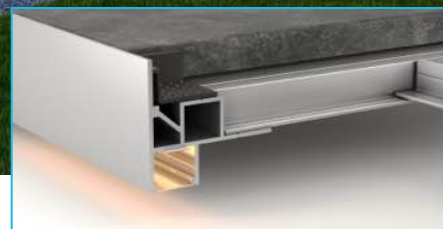
## LED control

- Switch
- Remote control
- App control (WiFi)
- DALI

# Data sheet – LED edge profile “Downlight”



**Profiles & LED technology**  
Everything from a single source!



## Product description

The TALUX edge profile Downlight makes it quick and easy to build high-quality indirect lighting in patio and balcony spaces. The integrated light channel underneath the profile creates an impressive under-lighting effect on the free-standing sides of the patio area, giving the impression of a floating surface. The profile is therefore ideal for detached patios and pool copings, for example, which are set off superbly with the indirect lighting.

The edge profile Downlight is compatible with the TALUX Slim System (22 mm) and complements the functional advantages of the TALUX System with innovative and creative options for indirect lighting.

To match the profile, we offer ready-made corner modules, water-protected (IP67) LED strips in various colours and white hues, control sets, and clip-on plastic covers for light diffusion. To achieve a premium quality surface, the profiles are also available powder-coated in a RAL colour of your choice.

## Technical data

### The advantages at a glance

- ✓ Integrated light channel for straightforward installation of indirect lighting
- ✓ Innovative system solution
- ✓ Low profile height of 42 mm for low build-up heights
- ✓ Suitable for tiles with 20 mm thickness
- ✓ Profiles & LED technology from a single source

### Technical data for profiles

Material: Aluminium EN AW 6060 T 66  
Surface: mill-finished / powder-coated  
Lengths: 3 m / 6 m

### System accessories

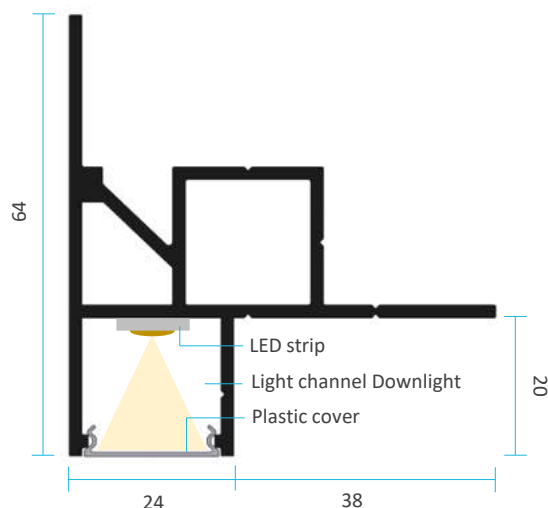
- Exterior and interior corners
- Plastic covers
- LED lighting and controls

### LED lighting (IP67)

- Warm white / neutral white / cool white
- CCT (all shades of white)
- RGBWW (all colours + warm white)
- RGB-CCT (all colours + all shades of white)

### LED control

- Switch
- Remote control
- App control (WiFi)
- DALI







**Profiles & LED technology**  
Everything from a single source!

## Product description

The TALUX light line profiles Inlight facilitate the swift and simple creation of high-quality indirect lighting in patio and balcony areas. With the profiles with light channel, you can integrate any desired light lines into the installation surface. Whether individual straight lines or U-shaped, L-shaped and rectangular designs, the Inlight profiles give you numerous design options and set the stage for seating groups or plant elements, for example.

The Inlight light line profiles are compatible with all TALUX systems (Slim or Raised, 22 or 38 mm) and complement the functional advantages of the TALUX System with innovative and creative options for indirect lighting.

To match the profile, we offer water-protected (IP67) LED strips in various colours and white hues, control sets, and clip-on plastic covers for light diffusion.

## Technical data



## The advantages at a glance

- ✓ Integrated light channel for straightforward installation of indirect lighting
- ✓ Innovative system solution
- ✓ Two versions available, with and without support strip
- ✓ Suitable for all tile formats
- ✓ Profiles & LED technology from a single source

## Technical data for profiles

Material: Aluminium EN AW 6060 T 66  
Surface: mill-finished / powder-coated  
Lengths: 3 m / 6 m

## System accessories

- Plastic covers
- LED lighting and controls

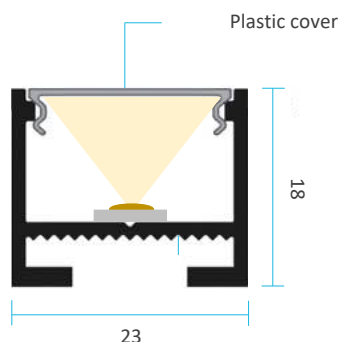
## LED lighting (IP67)

- Warm white / neutral white / cool white
- CCT (all shades of white)
- RGBWW (all colours + warm white)
- RGB-CCT (all colours + all shades of white)

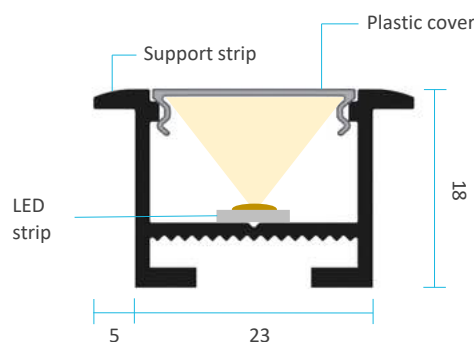
## LED control

- Switch
- Remote control
- App control (WiFi)
- DALI

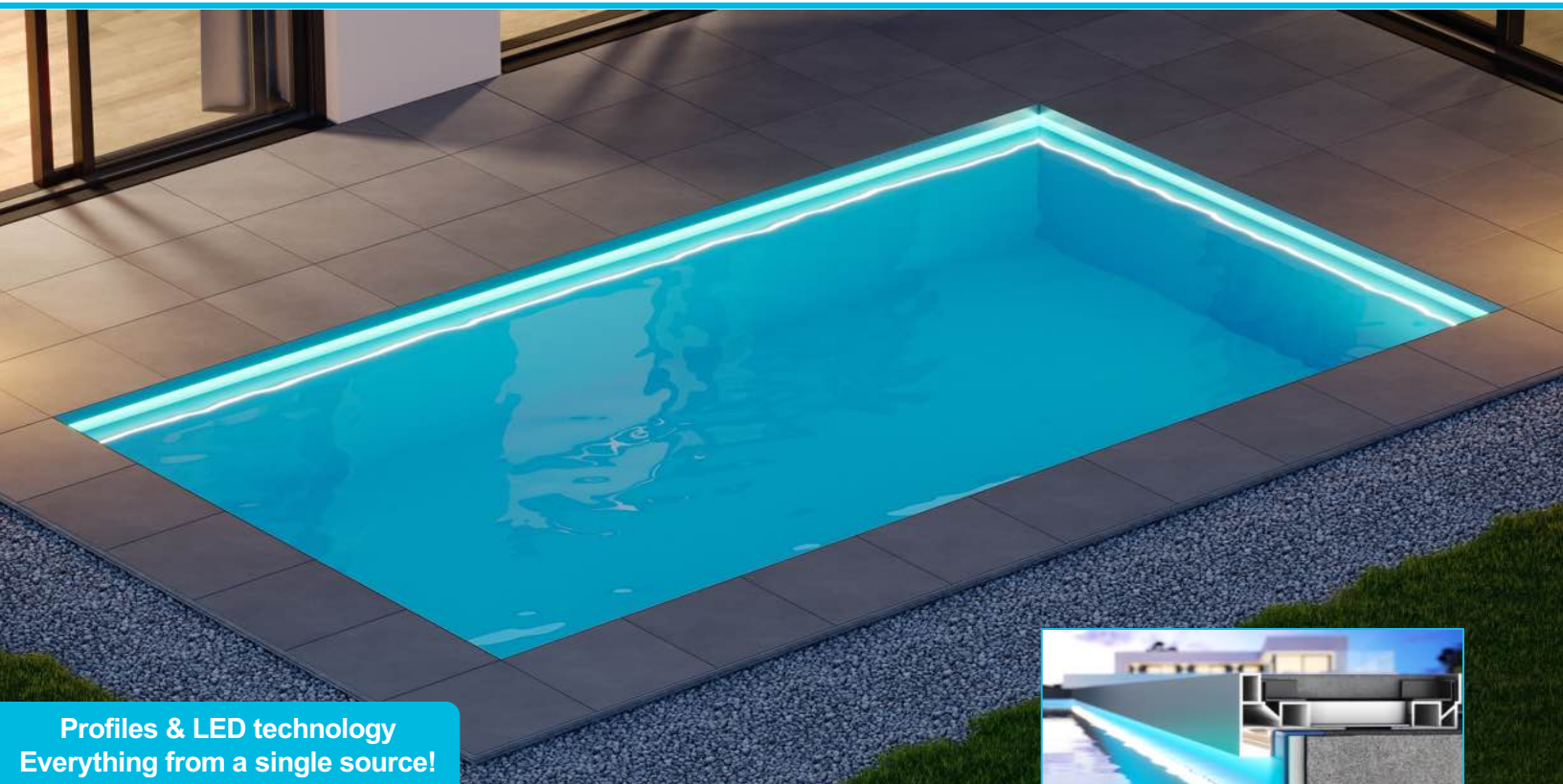
**Profile Inlight 20**  
(without support strip)



**Profile Inlight 20S**  
(with support strip)



## Data sheet – profile for pool copings “Downlight”



**Profiles & LED technology**  
Everything from a single source!



### Product description

The TALUX pool coping profile Downlight makes it quick and easy to build high-quality pool copings, optionally with integrated indirect lighting. The visible part of the profile that protrudes over the edge of the pool is the visual finish of the TALUX system on the pool and can be powder-coated in a RAL colour of your choice. Use the light channel underneath the profile to illuminate the pool impressively and set the stage.

The pool coping profile Downlight is compatible with the TALUX Slim System (22 mm) and complements the functional advantages of the TALUX System with innovative and creative options for pool coping and indirect lighting.

To match the profile, we offer ready-made corner modules, water-protected (IP67) LED strips in various colours and white hues, control sets, and clip-on plastic covers for light diffusion. To achieve a premium quality surface, the profiles are also available powder-coated in a RAL colour of your choice.

### Technical data

#### The advantages at a glance

- ✓ Integrated light channel for straightforward installation of indirect lighting
- ✓ Innovative system solution
- ✓ Low profile height of 42 mm for low build-up heights
- ✓ Suitable for tiles with 20 mm thickness
- ✓ Profiles & LED technology from a single source

#### Technical data for profiles

Material: Aluminium EN AW 6060 T 66  
Surface: mill-finished / powder-coated  
Lengths: 3 m / 6 m

#### System accessories

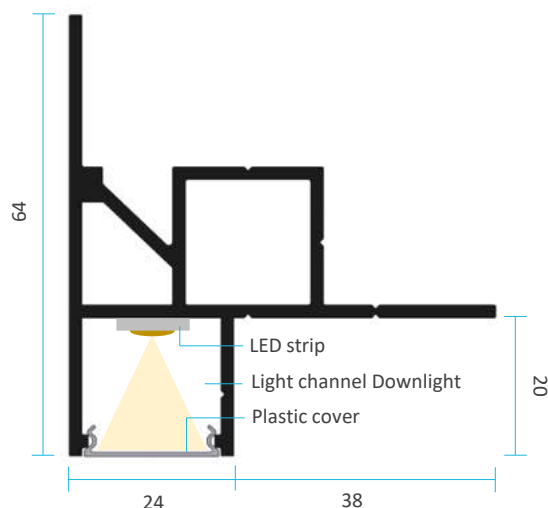
- Exterior and interior corners
- Plastic covers
- LED lighting and controls

#### LED lighting (IP67)

- Warm white / neutral white / cool white
- CCT (all shades of white)
- RGBWW (all colours + warm white)
- RGB-CCT (all colours + all shades of white)

#### LED control

- Switch
- Remote control
- App control (WiFi)
- DALI







**Profiles & LED technology**  
Everything from a single source!

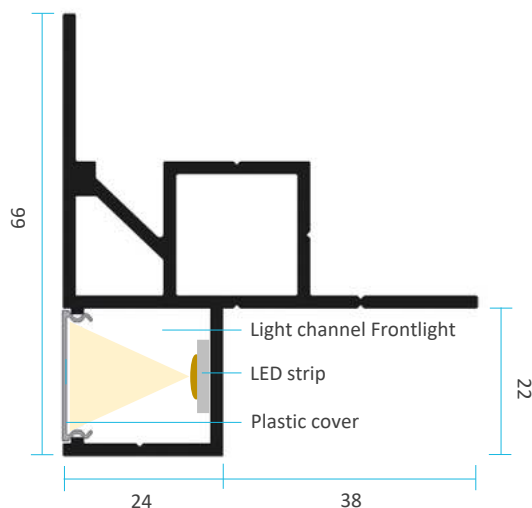
## Product description

The TALUX pool coping profile Frontlight makes it quick and easy to build high-quality pool copings with integrated indirect lighting. The visible part of the profile that protrudes over the edge of the pool is the visual finish of the TALUX system on the pool and can be powder-coated in a RAL colour of your choice. Use the light channel on the front the profile to illuminate the pool impressively and set the stage.

The pool coping profile Frontlight is compatible with the TALUX Slim system (22 mm) and complements the functional advantages of the TALUX System with innovative and creative options for pool coping and indirect lighting.

To match the profile, we offer ready-made corner modules, water-protected (IP67) LED strips in various colours and white hues, control sets, and clip-on plastic covers for light diffusion. To achieve a premium quality surface, the profiles are also available powder-coated in a RAL colour of your choice.

## Technical data



## The advantages at a glance

- ✓ Integrated light channel for straightforward installation of indirect lighting
- ✓ Innovative system solution
- ✓ Low profile height of 44 mm for low build-up heights
- ✓ Suitable for tiles with 20 mm thickness
- ✓ Profiles & LED technology from a single source

## Technical data for profiles

Material: Aluminium EN AW 6060 T 66  
Surface: mill-finished / powder-coated  
Lengths: 3 m / 6 m

## System accessories

- Exterior and interior corners
- Plastic covers
- LED lighting and controls

## LED lighting (IP67)

- Warm white / neutral white / cool white
- CCT (all shades of white)
- RGBWW (all colours + warm white)
- RGB-CCT (all colours + all shades of white)

## LED control

- Switch
- Remote control
- App control (WiFi)
- DALI





LED strips and control sets

TALUX offers a comprehensive selection of LED strips in various hues of white and colour to match the LED profiles, as well as various control options. We customize the products to meet your requirements. TALUX provides profiles and LED technology from a single source!

LED strip

Our 24-V strips with IP67 rating are ideally suited for outdoor use on patios and balconies. Featuring widths between 10 and 14 mm and a double-sided adhesive strip on the back, our strips can be installed effortlessly into the TALUX LED profile's light channels. The high-luminosity LED strips provide homogeneous and impressive indirect lighting on your patio.

White variants:

- + warm white 2,900 Kelvin
- + neutral white 4,200 Kelvin
- + cold white 6,200 Kelvin
- + CCT (all shades of white) 2,700 – 6,500 Kelvin

Colour variants:

- + RGB-WW (all colours + warm white) RGB + 2,700 Kelvin
- + RGB-CCT (all colours + all shades of white) RGB + 2,700 - 6,500 Kelvin

LED controls

TALUX offers a wide range of possibilities to control the LED strips. Whether by switch, wireless remote control or control via app, TALUX has the right control for your requirements and customises the necessary components for your project.

Switch control

We supply IP65-protected switching power supplies to connect to the 230V household mains and to control the unit via a standard toggle switch. This type of control is suitable for single-white strips without dimming or colour change.

Wireless control

You receive an IP65-grade switching power supply, an IP33-grade wireless LED controller and a remote control for wireless operation of the LED installation. The wireless control is suitable for all strips and lets you change the colour as well as dim the LED strips.

App/WiFi control

You receive IP65-protected switching power supplies, IP20-protected zigBee LED controllers, waterproof junction boxes (IP68) for the LED controllers as well as a Philips Hue Bridge as a Smart Home control centre to control the LED installation via app. The control via app is suitable for all strips and lets you change the colour as well as dim the LED strips.

DALI control

You will get IP65-protected DALI switching power supplies for controlling the LED installation via DALI interface (e.g. DALI dimmer). The DALI control is suitable for single-white strips and it enables dimming of the LED strips.

## Which tools do I need?

We recommend the following tools for straightforward and swift assembly:

- Crosscut and mitre saw with metal blade (for shortening the profiles and optionally for precise cutting of mitres at corners  $\neq 90^\circ$ )
- Spirit level (one short and long version each)
- Cordless drill (with appropriate bits and 3 mm metal drill bit)
- Protractor (optional – for measuring and fitting corners  $\neq 90$  degrees)
- Laser (optional – for the alignment of the build-up height for sloping surfaces and different build-up heights)

## Do I have to use screws to connect the secondary profile for extension?

No, just align the secondary profiles with a gap of a few millimetres. The weight of the tiling will stabilise the secondary profiles after installation and stop them from shifting. Make sure that the height is evenly adjusted on either side of the joint. The length of the secondary profile sections should not be less than 1.50 m (if necessary, cut the profiles accordingly) and the joint of the secondary profiles should not meet a tile joint. If you still want to fasten them with screws, you can use our connection profiles or longitudinal connectors. You can also screw or rivet the secondary profiles to the edge profiles using the support strip.

## Where and how often should I position my height adjustment points?

The Slim system variant should be underpinned at least every 80 cm, the Raised system variant at least every 120 cm. Depending on the tile dimensions, substrate conditions and system variant, it may be advisable to position the support points more frequently and at the corresponding tile joints (for example: substructure every 60 cm for tiles with 60/60/2 cm with the Slim system). An inspection of the system after the first square metres have been erected can help you to decide whether the number and positioning of the support points are appropriate for your building conditions.

## Why do I need the aluminium flat strip or the connection profiles?

Despite the high rigidity of aluminium, the profiles are not completely inflexible. On long, exposed sides of the installation surface ( $>3$  m), we advise to connect the edge profile at some points with two adjacent secondary profiles to prevent the outer row of tiles from protruding when strong shear forces act on the surface. For this purpose, use either the flat strip or the connection profiles, which are fastened to the undersides of the edge profile and the secondary profiles from above through the support strip.

## What is the purpose of the support profiles and how are they used?

The TALUX support profiles are used for the central support of large format tiles from a width of 60 cm. This provides additional protection for the tile against strong point loads and possible rupture. For the installation and fixation of the profiles, we recommend applying a drop of commercially available silicone to the contact surface of the profiles. To minimise noise generation, place a TALUX support pad between the support profile and the tile.

## How do I shape corners which are not 90 degrees and narrow niches, for example at doors?

Instead of using our ready-made corner modules, all profiles can be individually mitred on site to create any required angle. To join the cut profile pieces in this application, use two exterior corner connectors, bend them to the appropriate angle and fit them to the profile pieces with the screws supplied. The same method can be used to create door niches whose shallow depth does not allow the use of the corner modules.

## How long will it take to install the TALUX system?

Generally speaking, the installation time depends on various circumstances such as the location of the surface (ground level or balcony), complexity of the surface (simple rectangle or many corners and niches), installation pattern, covering and the experience of the craftsman. Yet plenty of experience from installers indicates that time savings of up to 30 % can be achieved compared to conventional installation methods, such as using pedestals, grit or mortar.

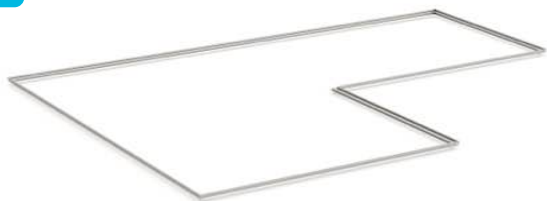
## Are there any questions left unanswered?

Our customer service will be pleased to help you! Please send us an e-mail to [info@talux-system.de](mailto:info@talux-system.de) or contact us by phone at +49 6022 / 264 11 57

# Installation guide

The TALUX system is quick and easy to install. The following installation guide describes the few steps with a graphic illustration and a short explanation.

1



Start with building a frame in the format of the floor plan using edge profiles and corner modules. Trim the profiles with a cut-off saw to the required length using a metal blade.

2



To create the corners, insert the corner modules with integrated connector into the edge profiles.

3



Drill the edge profiles with a 3 mm drill bit where the connectors are located and fasten the corner module to the edge profiles using the provided screws.

4



For joining edge profiles, push a longitudinal connector into an edge profile, aligned in the centre. Pre-drill the edge profile at the connector's level and fasten it with screws.

5



Next, insert the second edge profile and proceed in the same way as in the previous step to join the profiles.

6



Then trim the secondary profiles to size and place them in the system. Pay attention to your chosen tile format and installation direction when aligning.

7



Position the secondary profiles on the support surfaces of the edge profiles and screw or rivet them there if required. Place the profiles loosely against each other at the joints leaving a clearance of 3-5 mm.

8



For tile formats wider than 600 mm, you now use the support profiles. Cut them corresponding to the tile width, minus 60 mm, or use the pre-cut profiles.

Please consult our TALUX installation video on the web.  
Simply scan the QR code on the right.



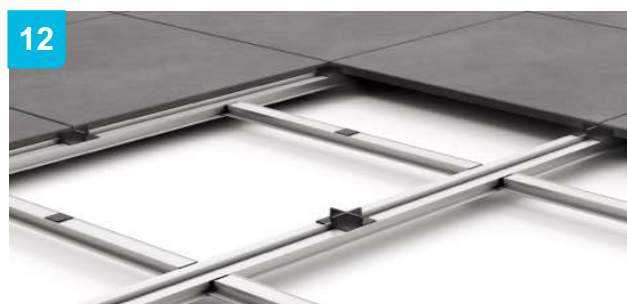
Then place the support profiles on the bearing surfaces of the edge and secondary profiles. We recommend to use a bit of silicone on the support surfaces.



With the TALUX support feet, which consist of a base plate, spacer ring and support plate, you can now adjust the height of the system as required.



Alternatively, use continuously adjustable pedestals or rectangular paving stones for height compensation. You can use the rubber pads and wedges for fine adjustment.



As soon as the substructure has been prepared, the tiles can be laid together with the joint elements.



Use the corner, T- and cross-shaped joint elements according to their laying pattern (cross joint or bond).



Place the tiles on the dimples of the joint element support surface. This compensates for minor material variations (up to 1 mm) in the tile.



If it is required, fasten the finishing covers to the outer recess of the edge profiles next. For this purpose, pre-drill the cover strip and the edge profile with a 3 mm metal drill bit and fasten the cover strip with screws so that it is flush.



Finally, inspect the result and check the stability of the tiles. You can easily make small adjustments later by removing individual tiles and adjusting the height compensation of the substructure.

# Further assembly instructions

## General advice:

- Examine the substrate for proper waterproofing, a suitable protective covering and sufficient load-bearing capacity (point load of the support points). When installing on insulation, we recommend a compressive strength of at least 150 kN/m<sup>2</sup> and a load area of at least 225 cm<sup>2</sup> per support point. When installing on insulation or waterproofing, we strongly recommend that you seek qualified advice (e.g. from a building surveyor) and professional planning and implementation by a qualified specialist company.
- To prevent chemical reactions and mechanical stresses during installation on any waterproofing membranes that may be present, we recommend the use of foil-laminated building protection mats.
- We recommend the use of drainage gutters for door niches and windows – especially for barrier-free transitions. We recommend this in particular for unroofed areas. For more information on this topic, please see: Flat Roof Guidelines DIN 18040-Part 2 and Thresholds on Balcony and Roof Terraces DIN 18531-Part 5.
- The aluminium profiles can be cut to the required length on site using a regular cut-off saw with a metal blade. Wear safety goggles and hearing protection when cutting the profiles. Deburr cut profiles with a file. Do not cut the profiles to size on the waterproofing of a surface to be laid because the shavings are sharp-edged.
- Fasten the edge profiles with screws firmly to the external and internal corners as well as to the flat, longitudinal and corner connectors. This is the only way to ensure that the tiles are firmly positioned in the system and can no longer shift or wobble.
- Fasten the exterior and interior corners as well as the flat, longitudinal and corner connectors with the supplied self-drilling screws 3.5/16 - T15. Pilot drilling the profile with a drill bit (diameter: 3 mm) will make it easier to drive in the screws.
- Long, exposed edge profiles longer than 3,000 mm need to be connected with at least two adjacent rows of secondary profiles. That way, you can be sure that the edge profile will not be pushed outwards under shear forces. We recommend the use of connection profiles or aluminium flat strips which are fastened to the undersides of the profiles using suitable 3.5/16 - T15 self-drilling screws.
- Place the secondary profiles on the horizontal face of the edge profiles. The secondary profiles are laid butt to butt at joints. Ensure a clearance of 3-5 mm and suitable height compensation. For more rigidity, the secondary profiles can be screwed or riveted to the support strip of the edge profile and to each other using the TALUX longitudinal connectors.
- On the TALUX system, you can install ceramic, stone and calibrated natural stone tiles as well as timber and WPC boards from a thickness of 20 mm and in all formats. When installing boards, use the secondary profiles without a central web in combination with suitable screws (visible installation) or fastening clips (invisible installation).
- In the case of uneven substrates or structural conditions that require an installation height above the available profile heights, ensure appropriate height compensation during the installation. The TALUX rubber pads and wedges allow precise levelling of the system in the range of 4-41 mm. The TALUX support feet and wedges can compensate for height differences between 30 and 215 mm. Alternatively, you can use commercially available, fully adjustable pedestals or, for example, rectangular paving stones for substructure and height compensation.
- The minimum spacing between the edge profiles and adjoining building components (walls, parapets ...) should be at least 10 mm.
- The aluminium profiles are made of alloy EN AW 6060 T66 in the press-finished variant, which features high weather resistance and a good resistance to salt water. Due to its chemical properties, it is important to ensure that the aluminium is not exposed to agents (e.g. cleaners or even cement) in the pH range outside 4 to 9.
- Due to the nature of the material and the production process, aluminium in the press-finished version may show minor scratches and some extrusion marks. Furthermore, aluminium may turn dull and appear darker over time when it comes in contact with water and air. Both do not affect the quality and resilience of the material and are purely optical effects. For a higher quality finish, we recommend powder-coated profiles on visible surfaces.

## Application instructions for laying tiles

- The secondary profiles always need to follow the longer sides of the tiles to be installed. Take the desired installation pattern (cross joint, bond, diagonal) into account during the planning and before the system is installed.
- The tile material is installed on the profiles using plastic joint elements. This results in a joint width of 4 mm. For the secondary profile without central web, use joint elements and support pads together with the cross joint supports. In this way, it is possible to achieve joint widths of 2 mm.
- We recommend the use of the support profiles for tiles with a width of 600 mm or more to protect them against strong point loads. The profiles are positioned on the horizontal support surfaces of the edge and secondary profiles. To achieve lasting rigidity and to reduce noise, we recommend applying a little silicone to the contact surface. The necessary length of the support profiles corresponds to the width of the tile, minus 60 mm. Owing to possible tolerance variations of the tile manufacturers, check the exact tile dimensions in advance. To minimise noise generation, place a Talux support pad on top of the support profiles. Refer to the following list for the number of recommended support profiles per tile:
  - from a width of 600 mm: 1 supporting profile per tile
  - from a width of 900 mm: 2 supporting profiles per tile
  - from a width of 1200 mm: 3 supporting profiles per tile



- Cut the edge tiles to an exact fit, taking the joint width into account. This is the only way to ensure that the tiles are firmly positioned in the system and can no longer shift or wobble.
- For tile formats of 600/400 mm and larger, we suggest using the square support pads between the tile and the secondary profile at a distance of approx. 300-400 mm to minimise noise.

## Application instructions for laying boards

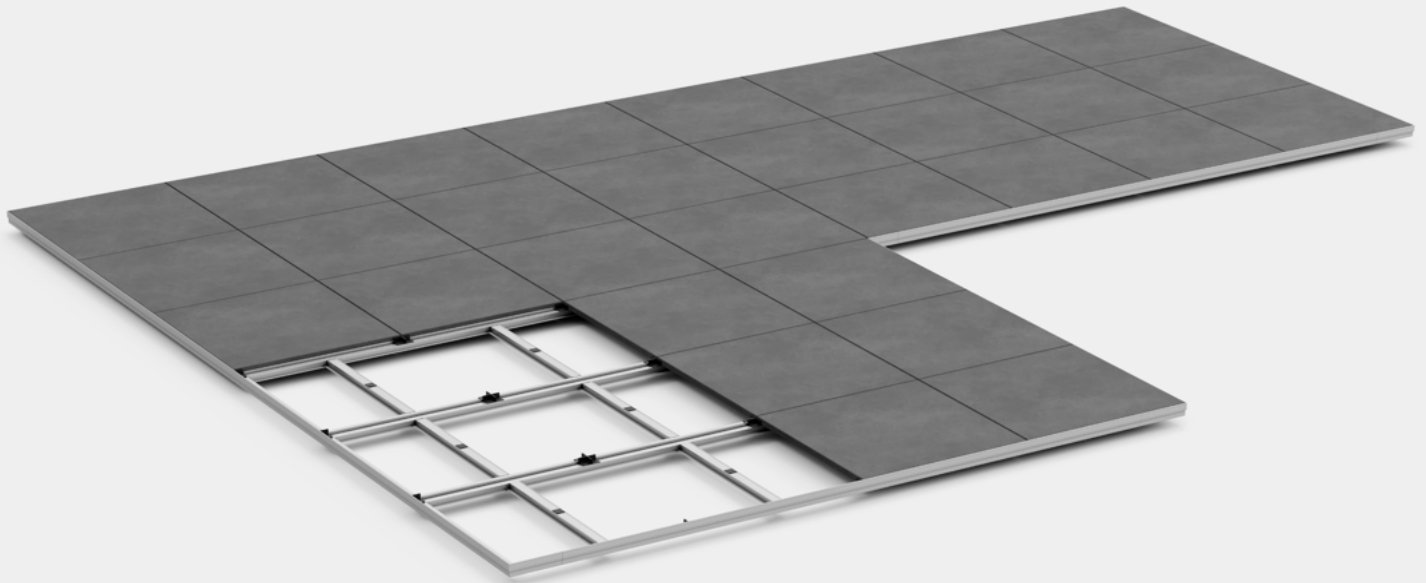
- Make sure to place the secondary profiles at a 90° angle against the running direction of the boards. Accordingly, take the desired laying direction of the boards into account in the planning and before installing the system. For fastening, fasten the secondary profiles onto the support strips to the edge profiles using suitable screws. The TALUX connection profiles can be used to join secondary profiles in length.
- The number and the spacing of the secondary profiles in the installation area results from the spacing specified by the board manufacturer and must not be exceeded.
- Both timber and WPC boards are fastened to the secondary profiles with the help of the screw channel. For visible screw fittings, we recommend pre-drilling the board and secondary profile before fastening the screw. In the case of invisible fixing, use the fixing clips specified by the manufacturer and check for compatibility with the Talux system.
- The choice of suitable screws, both for visible and invisible installation, is the responsibility of the board manufacturer or the installer. Pay special attention to suitable strength, approval, material compatibility and dimensions of the screws.
- When laying the boards, observe the manufacturer's specifications regarding the required ventilation distances.

## Application instructions when using the LED profiles and LED technology:

- The LED edge profiles Uplight, Frontlight and Downlight are compatible with the Slim system components (22 mm). They are not compatible with the Raised system or the 38 mm variant. The Inlight 20 light line profile is further compatible with the Raised system (22 mm), the Inlight 20S profile with support strip is further compatible with the Slim and Raised systems (38 mm).
- The installation of the LED edge profiles is done in the usual way using the ready-made corner modules and the internal longitudinal connectors. For corners larger or smaller than 90 degrees and small projections, the profiles can also be mitred to fit and screwed directly to the external connectors.
- The plastic covers serve to diffuse the light and protect the LED strips against contamination and mechanical stress. The diffusers are clipped onto the light channels of the profiles with light pressure. Mitre the plastic covers at the corners as required. Two plastic covers can be laid end to end along their length. Always use a suitable saw blade when cutting the plastic covers to ensure a clean cut without chipping.
- A thorough inspection of the LED strips and their control components prior to installation is mandatory. Any accessories such as cables, IP67 connection terminals etc. are not included in the scope of delivery and must be selected and provided on site or by the electrician.
- During the installation of the LED profiles, make sure that the connecting cables and control lines of the LED technology are correctly positioned and inserted. Pre-drill suitably large holes in the light channel in the corners so that the connecting cables of the LED strips can be pulled through.
- When installing the supply lines, ensure that the cable gauge is suitable for the length of the supply line and the power rating of the attached installation.
- We recommend to start the installation of the LED strip segments from the respective corner points to avoid that strips have to be routed around the corner. However, if this is still necessary, you need to disconnect the strips and reconnect them while restoring the IP67 protection. To achieve a perfect illumination of the corners and to prevent dark corners, position the first luminaire unit of the strip as close as possible to the corner point when installing the LED strips.
- Use waterproof junction boxes to protect IP20 control elements such as WiFi controllers. Ensure that the boxes are installed correctly and that the cables have a suitable gauge.
- You can shorten the LED strips at least every 7 cm at the designated markings and using standard scissors. Re-establish the IP protection after shortening the strip. Use the matching sealing caps and silicone for this purpose.
- We recommend installing the LED control components in a central location that remains accessible at all times.
- Only qualified technicians may install the LED technology and connect it to the supply line. Comply with the manufacturer's instructions on handling, assembly, etc. The customer or the installer is responsible for the professional installation and compliance with the required protection class of the entire LED installation and its individual components. Talux will not assume any liability for damage caused by improper installation or use of LED components.

*The information provided in our documentation (product description, data sheets, assembly instructions, etc.) is based on our experience and research. Due to the very different construction site and processing conditions and the local conditions, the relevant rules, regulations and DIN standards must always be observed and included in the planning and implementation.*

*No liability for printing errors. Subject to changes.*



## Application guidelines for the TALUX aluminium profile system for dry, unbonded laying of stone, ceramic, calibrated natural stone tiles, as well as timber and WPC boards

### System description

The TALUX aluminium profile system means that stone, ceramic and calibrated natural stone tiles as well as wood and WPC boards can be laid easily, quickly and economically. Basically, the system consists of the edge profiles, corner modules (exterior corners, interior corners), secondary profiles, support profiles as well as the joint elements and supports.

### System properties

The perimeter edging of the edge profiles and the joint elements with dimples ensure that the boards are impact sound insulated and lay solidly. If properly executed, the tiles can no longer shift or wobble while the joint pattern remains the same.

### Application fields

The system is well suited for creating accessible surfaces on balconies, patios, flat roofs, roof terraces and walkways, as well as for special structures such as small and large pool copings, landings or stair treads.

### Profile data

The aluminium profiles are supplied in standard lengths of 6 m, 4 m and 3 m and have a press-finished surface. Bespoke lengths and special constructions are possible on request.

### Profile variants

- TALUX slim system (profile height 22 mm)
- TALUX raised system (profile height 64 mm)
- Edge profile with lateral upstand from 22 mm to 38 mm
- Secondary profile with central web or screw channel
- Supporting profiles

See data sheets and product overviews for more detailed information

### Accessories

Exterior and interior corners | Joint element supports | Joint elements | Connectors | Support pads | Underlays, support feet, wedges | Finishing covers | Drainage elements

### Tile material and boards

The Talux system is suitable for the following surfaces:

- For ceramic tiles thicker than 20 mm
- For stone tiles thicker than 38 mm
- Calibrated natural stone tiles from 20 mm thickness
- Timber and WPC boards from 20 mm thickness

### Joint width and laying pattern

The joints can be formed in 2 mm and 4 mm widths. Joint-free laying is also possible. The tiles and boards can be laid in a cross-joint, bond or diagonal pattern.

### Height compensation

To compensate for differences in height, use the TALUX support feet – consisting of a base plate, spacer rings and support plate – and wedges or commercially available, fully adjustable pedestals. Alternatively, you can also use rectangular paving stones. We recommend using suitable fleece or building protection mats to protect the substrate and, if necessary, a waterproofing layer.

### Distributed load

The permissible distributed load depends on the type and dimension of the substrate as well as the tile material used and must not exceed 5 kN/m<sup>2</sup>. Please refer to the tile manufacturer's information and DIN EN 1991-1-1, among others.

### Substrate

The TALUX aluminium profile system can be installed on the following substrates:

- Compacted soil (earth, crushed stone and gravel surfaces)
- Concrete surfaces or existing floor coverings such as tiles
- Pile foundation and strip foundation
- Steel or timber girder constructions with breakthrough protection
- Waterproofing membranes and roofing felt

#### ➤ Insulation

When installing on heat insulation, we recommend a compressive strength of at least of at least 150 kN/m<sup>2</sup> (kPa). Ensure that the load area does not fall below 225 cm<sup>2</sup> per support and that the distance between the load areas does not exceed 80/40 cm. The insulation must neither sag nor bounce.

#### ➤ Waterproofing

All types of waterproofing in combination with the appropriate protective and separating layers are permissible. Please consult the corresponding standard DIN 18531.

#### ➤ Slope

The substrate and surface slope should be at least 1-2 %. This applies in particular to barrier-free door and window entries as well as transitions.





TALUX GMBH | Einsteinstraße 1 | D-63868 Großwallstadt  
Ph.: +49 6022 2641157 | e-mail: [info@talux-system.de](mailto:info@talux-system.de) | Web: [www.talux-system.de](http://www.talux-system.de)

You are welcome to visit us at

